



The 10-Input Programmable Module **00-00941-000** is a member of Intellitec's Programmable Multiplex Control family. It works in combination with the PMC CPU or the IPX master and other standard, semi-custom, or custom I/O modules. The module can be used on either 12 or 24 volt systems.

The module provides ten digital inputs to the Intellitec multiplex systems. Each of these input channels is programmable to transmit to any of the 160 channels on a PMC loop. They can be programmed to be either high side or low side input to provide greater flexibility.



MODULE PROGRAMMABILITY

A number of parameters of the module are programmable, by the user, to provide a great deal of flexibility in its application. These parameters are set using a GUI on a PC and down loading it into the module through an on-board port, (J5). The programmable parameters include the following:

- channel allocation for each input
- input active state (high/pull up or low/pull down)
- input indicators on at active input or active input and test switch (SW1)

LED DIAGNOSTIC INDICATORS

The Module includes a set of eleven diagnostic LED indicators to aid in the servicing of the associated system. Next to the input Amp Mate-N-Lok style connectors, (J2, J3) there are ten green LEDs. Each of these are associated with one of the inputs. These LED's indicate the active state of the input, regardless if it is configured as a high or low signal input. To prevent excessive battery drain current, these LED's can be programmed to be on any time an input is active or only when it is active and the display button on the module is pressed.

There is also one red LED. This will illuminate if multiplex communications fail. In this case check the connections at J1.

The approximate module dimensions are 7.25" X 4.75" X 2.25" (184mm X 121mm X 57mm).

Works with Latching output modules

In the PMC system, the CPU is programmed to turn outputs on when the appropriate inputs are present. As with other input modules this module works the same way.

Because the module is programmable via a GUI, the inputs can be set to be on the same channel as a latching output. This provides additional flexibility when using the IPX master and latching output modules. If the input is set to the same channel as a latching output, that output will latch on and off as the input is toggled on and off.



131 Eisenhower Lane N., Lombard, IL 60148
630 268 0010 800 251 2408
www.intellitec.com

PMC - 10 Input Programmable Module

00-00941-000

SPECIFICATIONS

General Connections

00-00941-000

Nominal Vehicle Voltage

12V or 24V

J1-1	IPX + 12 Volts	
J1-2	PMC Signal	18 awg Min
J1-3	PMC Ground	14 awg Min
J5	Module Program Header, (Used with 10-00849-000)	

Environmental Out of Direct Weather

CHANNEL DESIGNATIONS

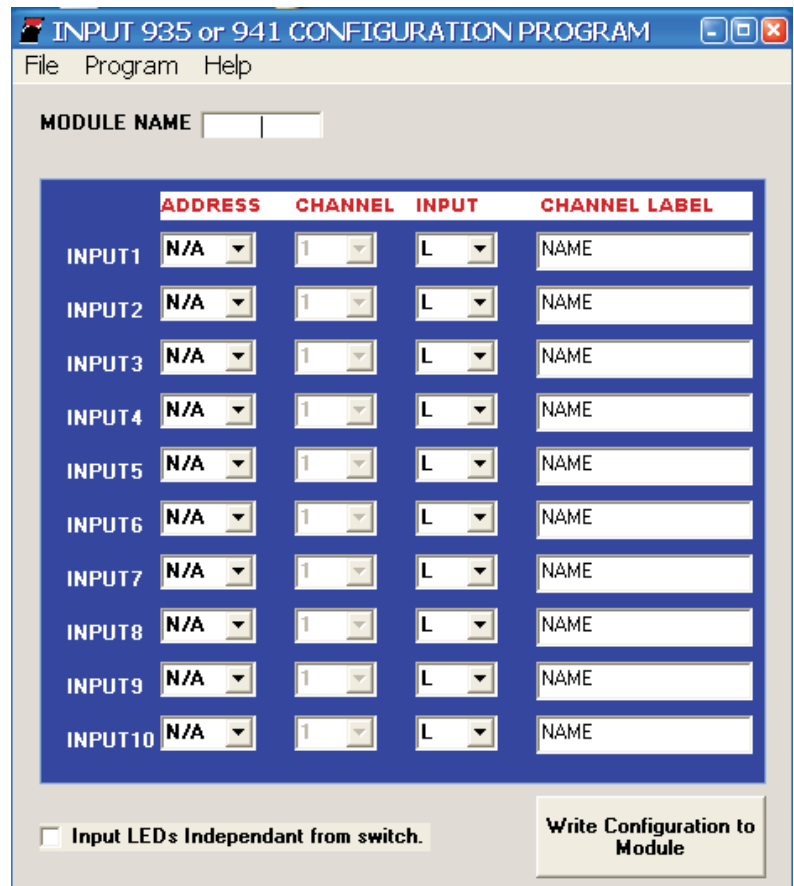
Input Connections

J2-1	Input 1
J2-2	Input 2
J2-3	Input 3
J2-4	Input 4
J2-5	Input 5
J2-6	Input 6
J3-1	Input 7
J3-2	Input 8
J3-3	Input 9
J3-4	Input 10

Module Set Up

There are a number of operating parameters that need to be set up in the module. They are set using a program on a PC with a GUI. This program is available from the Intellitec web site (www.Intellitec.com).

To program the module, a programming kit 10-00849-000.



MATING CONNECTIONS

Designator	Function	Connector	Mating Part #	Contact, Typical
J1	PMC/Com	3 Pin Amp Mate-N-Lok	1-480700-0	350919-3
J2	Inputs	6 Pin Amp Mate-N-Lok	640585-1	350919-3
J3	Inputs	4 Pin Amp Mate-N-Lok	1-480700-0	350919-3